

FOR LEASE CHARACTER RETAIL OPPORTUNITY

438 11TH AVENUE S.E. :: CALGARY, ALBERTA

NOW AVAILABLE

THE BISCUIT Block - CALGARY, ALBERTA

- SPACE AVAILABLE: Up to 15,000 SF
Main floor 7,500 SF
- RENTAL RATE: Market
- HIGHLIGHTS: "Brick and Mortar" interior
Minutes away from the Stampede grounds, Saddledome and BMO Centre
Easily accessible from Downtown
Transitioning area - supporting commercial and residential development
- OPERATING COSTS: \$10.00 including utilities



John Moss
Senior Sales Associate
403.750.0507
john.moss@cbre.com

CBRE

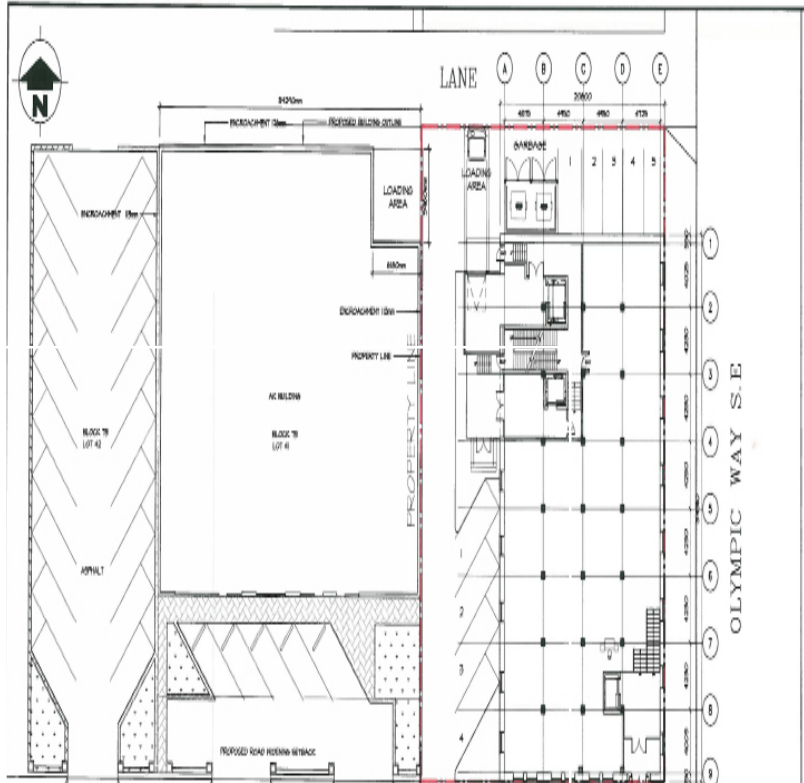
FOR LEASE

438 11TH AVENUE S.E.

:: CALGARY, ALBERTA

Retail 24/7.

FLOOR PLAN



John Moss

Senior Sales Associate

403.750.0507

john.moss@cbre.com

CB Richard Ellis | 530 - 8th Avenue SW | Suite 500 | Calgary, AB T2P3S8 | T 403-263-4444 | F 403.269.4202 | www.cbre.ca

This disclaimer shall apply to CB Richard Ellis Limited, a real estate brokerage, and its Canadian affiliates, CB Richard Ellis Alberta Limited, CB Richard Ellis Manitoba Limited, CB Richard Ellis Québec Limitée and CB Richard Ellis Advisory Services Inc. (collectively "CBRE").

© 2010 CB Richard Ellis Limited. The information set out herein (the "Information") is intended for informational purposes only. CBRE has not verified the Information and does not represent, warrant or guarantee the accuracy, correctness and completeness of the Information. CBRE does not accept or assume any responsibility or liability of any kind in connection with the Information and the recipient's reliance upon the Information. The recipient of the Information should take such steps as the recipient may deem necessary to verify the Information prior to placing any reliance upon the Information. The Information may change and any property described in the Information may be withdrawn from the market at any time without notice or obligation to the recipient from CBRE.

